



USB Demo Board Kit

Quickstart Guide

Connect the Demonstration Board to the mini USB connector on the USB cable.

1. Connect the USB A end of the cable to the USB port on your PC.
2. Run the “KionixDemos.exe” program from the CD or from the Kionix website <http://www.kionix.com/Downloads/downloads.htm>
3. Run the Configuration program from Start Menu -> Kionix Demos to configure and calibrate the sensor. (See “Configuration” below.)

Configuration

The configuration program, shown in figure 1, will allow you to configure the demo board.

1. **Interface** – The method used to communicate with the device. Currently the method is Gamepad, the USB COM port of the computer.
2. **Device** – The driver specific to the Kionix part being used. Because the tri-axis accelerometer is used through the gamepad driver, the driver named MiniUSB is accessed.
3. **Address** – This selects the port to which the device is connected. Press “Scan” to limit the list to ports that can actually be accessed. A pull down will show which ports are available. Select the correct port. Press “Test” to check that the device is connected properly.
4. **Performance** – Lay the device flat, press “Calibrate” and accept the default settings.

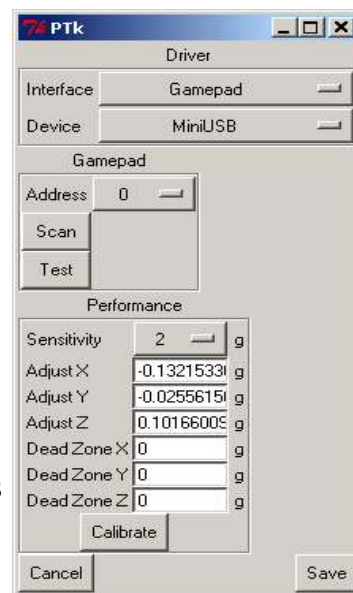


Figure 1 - configure.pl

Sensitivity – This is a pull down menu for selecting the sensitivity of the demo board. You must select the correct g level for your board or the demos will not function properly. The default sensitivity is 2g.

Adjust X/Y/Z – These are the amounts by which each reading on the relevant axis

is adjusted, in g's, before it is returned. This is to account for any slight variations in center the device might have.

Dead Zone X/Y/Z – This is the minimum absolute value a reading must reach before it is registered. If it is below this value, it will be read as zero. Having a dead zone can filter out noise, but at the cost of losing real readings if they are very small. The default of 0 is perfect for the demonstration programs.

When you are finished adjusting the settings press “Save” to save and exit the program.

Your board is now ready to run any of the demo programs located under Start/Programs/Kionix Demos. You do not have to run Configure again until you reboot your computer or disconnect the demo board.